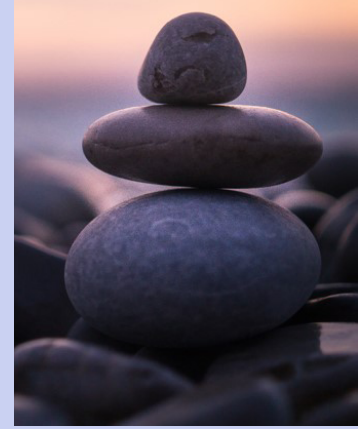


Course #3 Exploration Tool

Beyond Counting: Strategies to Collect and (Actually) Use Your FTC Data

Use this *Exploration Tool*—after watching the [animated video](#)—to spark conversations with your team about assessing data and developing initial action steps. Also, please join the [Live Conversation](#) on August 30 (or watch the [recording](#)) to hear from FTC practitioners who successfully use data to improve practice. Visit our FTC Practice Academy [site](#) for all recordings and materials on this topic. Below, we have provided discussion questions along with related resources.



5 Foundational Steps to (Actually) Use Your FTC Data

Let's first review two key procedures that apply to all five steps:

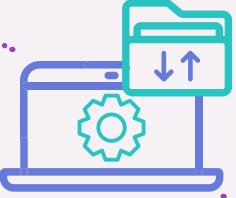




A. Institutionalize monitoring and evaluation: Neither is just an ad hoc or limited activity to meet a specific goal or comply with grant requirements. Staff must collect, manage, and use data to sustain and integrate the results into core program operations.



B. Engage individuals with lived experience: Ensure your team includes families and community members as co-developers throughout the monitoring and evaluation process—from determining what data to collect to deciding how to use it. It's particularly important to engage historically marginalized, misrepresented, or excluded communities.

| Action Steps | Discussion Questions | Resources |
|---|--|---|
| <p>1 DEFINE SUCCESS</p> | <ul style="list-style-type: none"> • Do you have consensus among all FTC partners and across all levels of governance on a shared mission and vision as well as how to define success? Do you revisit when new partners join the team? • What outcomes or performance measures allow the team to measure progress toward the shared mission and vision? • Do you focus performance measures on individual family members and the whole family? Do they reflect the priorities of all partners? • How does your FTC measure equitable program access and outcomes? | <ul style="list-style-type: none"> • Capacity Building Center for States – CFSR Statewide Data Indicators • Our Identities, Ourselves: An Anti-Racist Review on Collecting Accurate Data on Race and Ethnicity |
| <p>2 DECIDE ON METHODS & LEVEL OF INVESTMENT</p> | <ul style="list-style-type: none"> • What's the purpose of your monitoring and evaluation activities (e.g., ongoing program improvement, showing program effectiveness or cost savings)? • Based on the purpose, what's the buy-in from leadership/executive oversight group and agreed upon level of investment across all partners? • If the program attains specific agreed-upon outcomes, what resources will policymakers shift to expand or sustain the FTC? • How are the methods and level of investment memorialized (e.g., memoranda of understanding, data sharing agreements)? | <ul style="list-style-type: none"> • Practice-Level Strategies to Create Systems-Level Change: Results • Cost Analysis in Program Evaluation: A Guide for Child Welfare Researchers and Service Providers • Cost-Benefit Analysis: A Guide for Drug Courts and Other Criminal Justice Programs |

| Action Steps | Discussion Questions | Resources |
|---|--|--|
| <p>3 DEVELOP DATA INFRA-STRUCTURE & GOVERNANCE</p>  | <ul style="list-style-type: none"> • What is the availability and accessibility of the specific data elements required to calculate the team's shared performance measures? • Where are these data stored and who has access? • How reliable, valid, timely, and complete are the data? • Can you disaggregate the data to determine the progress and barriers that subgroups of participants and families with common characteristics experience (e.g., families with children under 3, families of color, fathers)? • What policies and procedures does the team need to manage how data are collected, reported, shared, and used? | <ul style="list-style-type: none"> • Data Capacity: What Is It and Does Our Family Treatment Court Have It? • Fundamentals of 42 CFR Part 2 |
| <p>4 CREATE A CONTINUOUS FEEDBACK LOOP</p>  | <ul style="list-style-type: none"> • Does a forum exist for routine sharing and discussion of data among multiple levels of staff? • How are you using data to inform leadership, decision-making, systems improvement, and sustainability? • Does your FTC collect baseline data to measure progress? Can it be disaggregated? | <ul style="list-style-type: none"> • Building Collaborative Capacity Series - Module 4: Establishing Administrative-Level Data Sharing to Monitor and Evaluate Program Success • Drop-off Analysis |
| <p>5 DEVELOP DATA-DRIVEN MESSAGING</p>  | <ul style="list-style-type: none"> • Who's your target audience? • Have you identified your team's desired communication goals for how the target audience should use the data? • What are your target audiences' needs, interests, timelines, and current priorities? • What is the best and most appropriate method of communicating the data (e.g., visual, audio, written materials)? | <ul style="list-style-type: none"> • Data Capacity: What Is It and Does Our Family Treatment Court Have It? • Practice-Level Strategies to Create Systems-Level Change: Results • Sustainability Planning Toolkit |



To continue exploring, visit our [website](#) or [contact us](#) for technical assistance.



CENTER FOR CHILDREN AND FAMILY FUTURES
Strengthening Partnerships, Improving Family Outcomes

This project was supported by Grant #2019-DC-BX-K013 awarded by the Office of Juvenile Justice and Delinquency Prevention, Office of Justice Programs, U.S Department of Justice. The opinions, findings, and conclusions or recommendations expressed in this publication/program/exhibition are those of the author(s) and do not necessarily reflect those of the Department of Justice.